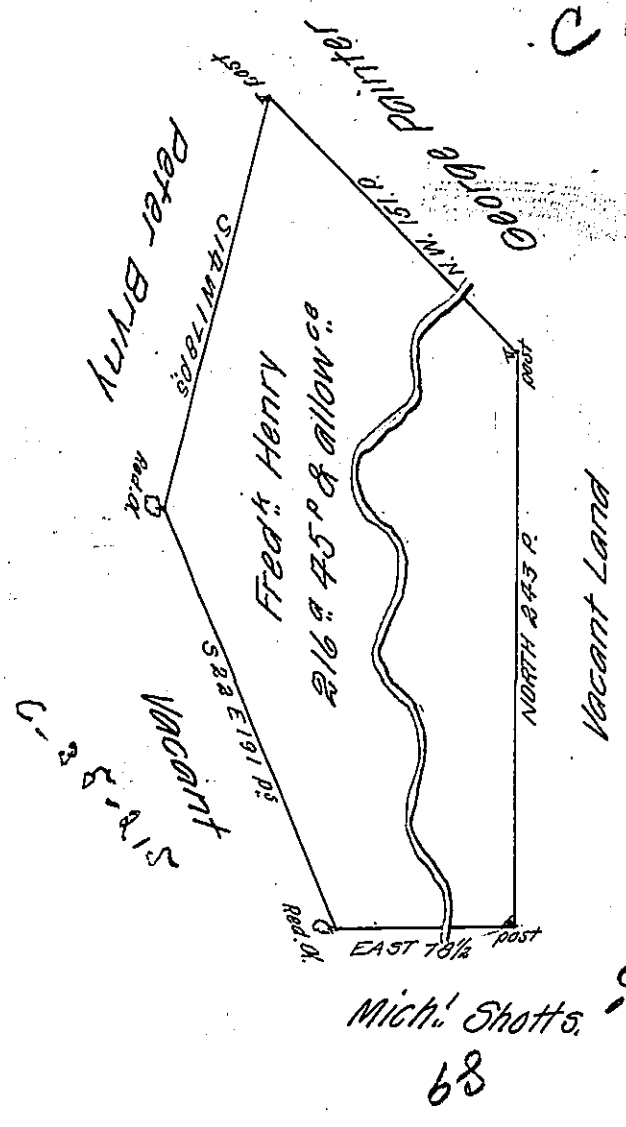


C 160-279



A Draught of a tract of Land situate in Hempfield Township in the County of Westmoreland containing Two hundred and sixteen acres 45 perches and the usual allowance of six Per Cent for roads &c.

Surveyed June 30th 1785 In pursuance of a warrant granted to Frederick Henry bearing date the 2^d day of June 1785

To John Lukens Esq.
 Surveyor General

Jn^o. Henderson D. S.

IN TESTIMONY that the above is a copy of the original remaining on file in the Department of Internal Affairs of Pennsylvania, made conformably to an Act of Assembly approved the 16th day of February, 1833, I have hereunto set my Hand and caused the Seal of said Department to be affixed at Harrisburg, this thirteenth day of March 1905

Loane P. Benson
 Secretary of Internal Affairs.